



Cashew Nuts

WELCOME, WE ARE ONVIT!

ONVIT. FRENCH WORD MEANING "WE LIVED". SINCE 2015, ONVIT HAS BEEN ENABLING US TO MAKE OUR DREAM COME TRUE IN CREATING RICH, HEALTHY AND FULL OF LIFE PRODUCTS. WE ARE A 100%-BRAZILIAN COMPANY AND OUR TEAM IS DRIVEN WITH PASSION AND DEDICATION. ALL THAT TOWARDS ENSURING A QUALITY PRODUCTION FOR THE CASHEW NUT KERNELS, A FOOD THAT IS RICH IN PROTEIN, VITAMINS, MINERALS, AND FLAVOR.



OVER 16 THOUSAND SQUARE METERS OF INFRASTRUCTURE

WITH MORE THEN 16 THOUSAND SQUARE METERS, WE PRODUCE OVER 2.5 MILLIONS KILOGRAMS A YEAR, RESULTING IN HUNDREDS OF JOBS OPPORTUNITIES, BOTH DIRECT AND INDIRECT. IN ORDER TO ENSURE OUR PRODUCTS WIL BE DELIVERED FRESH TO THEIR DESTINATIONS, WE USE SPECIAL PACKAGING AND BOTTLING TECHNIQUES, ENSURING MORE FLAVOR AND CRISPNESS TO THE PRODUCTS, WITHOUT THE NECESSITY OF ADDING ANY PRESERVATIVES OR ADDITIVES.



OUR GALLERY

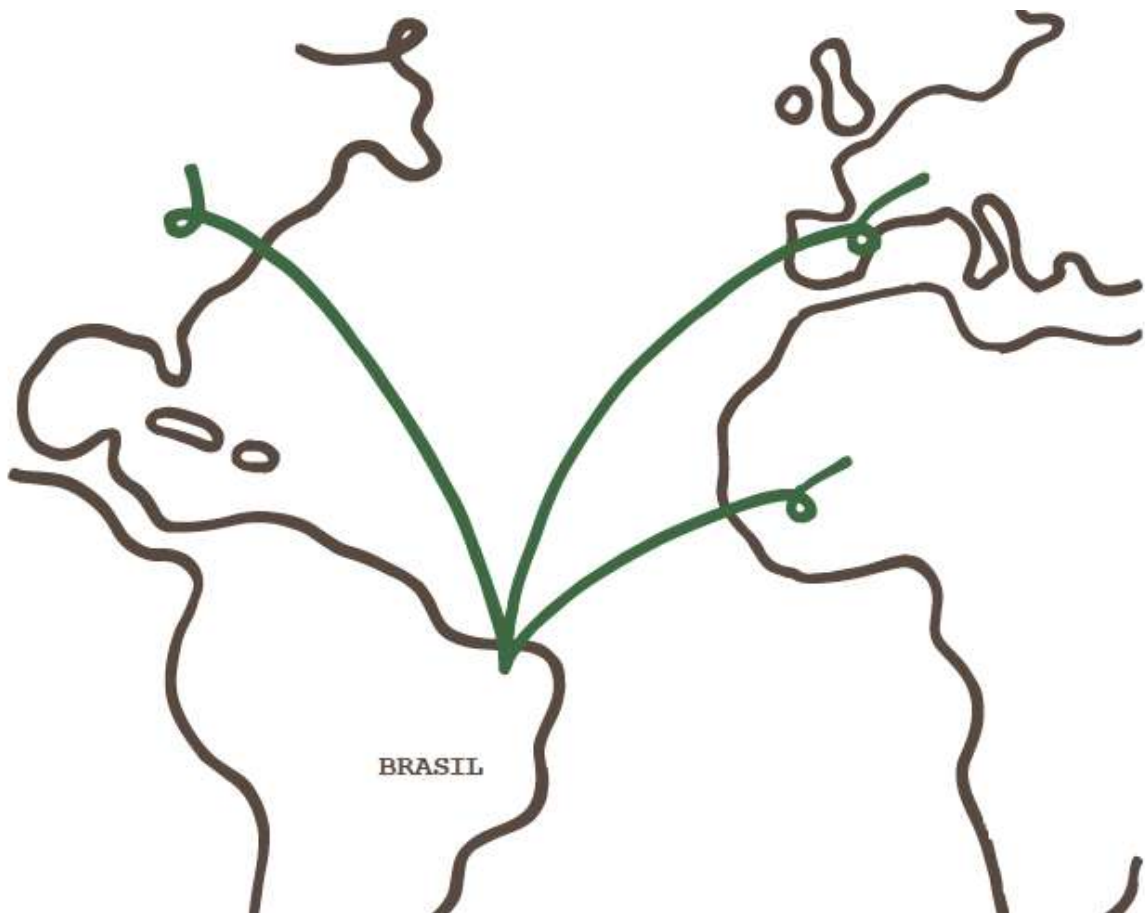


OUR GALLERY



WHERE ARE WE HEADING TO?

CEARÁ HAS A PRIVILEGED GEOGRAPHICAL LOCATION AND OUR PLANT MAKES USE OF IT. IN 2017, WE STARTED-UP OUR NEW INDUSTRIAL PLANT, IN THE MUNICIPALITY OF AQUIRAZ, THUS, BEING NEAR FROM TWO CRITICAL PORTS: 30 KILOMETERS AWAY FROM THE PECÉM PORT, REPRESENTING REDUCED TRAVELING TIME TO THREE CONTINENTS: NORTH AMERICA, AFRICA, AND EUROPE.



HIGH QUALITY IS OUR MISSION

HERE, AT ONVIT, OUR PROCESSES ARE CLEAN, EVERYTHING IS USED AND NOTHING IS WASTED: THE SHELL IS USED AS SOURCE OF ENERGY; OIL TAKEN FROM THE SHELL IS EXPORTED; THE KERNELS THAT ARE NOT APPROPRIATE FOR HUMAN CONSUMPTION ARE TRANSFORMED IN ANIMAL FOOD AND THE PROCESSED WATER IS TRATED AND REUSED AS WELL AS FOR THE USE OF RAINFALL WATER.

WE CARE FOR QUALITY, ADOPTING STRICT INSPECTIONS, SELECTION, AND PRODUCTION PROCESSES, MEETING THE GOOD MANUFACTURING PRACTICES AND FOLLOWING THE STRICT SAFETY CONTROLS IN ALL STAGES. WE ALSO CONDUCT THE RAW MATERIAL TRACKING FROM THE FARM TO OUR CUSTOMERS. OUR CASHEW NUT KERNELS ARE FREE FROM TRANSGENICS, AS WELL AS STRICTLY SELECTED AND RATED.

NO GMO - GLUTEN FREE - LACTOSE FREE - ADDITIVE FREE - PRESERVATIVES FREE





SLW1 - 180 (SUPER LARGE WHOLE)

DELICIOUS WHOLE KERNEL, SUPER LARGE SIZE, 1st QUALITY, PALE-COLORED CASHEW NUT KERNEL, CONTAINING UP TO 180 UNITS BY POUND-WEIGHT (453,59 g).



LW1 - 210 (LARGE WHOLE)

DELICIOUS WHOLE KERNEL, LARGE SIZE, 1st QUALITY, PALE-COLORED CASHEW NUT KERNEL, CONTAINING FROM 181 TO 210 UNITS BY POUND-WEIGHT (453,59 g).



W1 - 240 (MEDIUM WHOLE)

DELICIOUS WHOLE KERNEL, MEDIUM SIZE, 1st QUALITY, PALE-COLORED CASHEW NUT KERNEL, CONTAINING FROM 211 TO 240 UNITS BY POUND-WEIGHT (453,59 g).

AVAILABLE TYPES :

- NATURAL
- ROASTED
- ROASTED AND SALTED



W1 - 320 (SMALL WHOLE)

DELICIOUS WHOLE KERNEL, SMALL SIZE, 1st QUALITY, PALE-COLORED CASHEW NUT KERNEL, CONTAINING FROM 241 TO 320 UNITS BY POUND-WEIGHT (453,59 g).



W1 - MIX (MIX OF ALL WHOLE SIZES)

DELICIOUS WHOLE KERNELS, WITH THE MIXTURE OF ALL WHOLE SIZES, 1st QUALITY, PALE-COLORED CASHEW NUT KERNEL, WITHOUT THE COUNTING OF UNITS BY POUND-WEIGHT.

AVAILABLE TYPES:

- NATURAL
- ROASTED
- ROASTED AND SALTED



W3 (SCORCHED WHOLE)

DELICIOUS WHOLE CASHEW NUT KERNEL, OF 3rd QUALITY WITH A COLOR THAT COULD BE DARK YELLOW, BROWN OR AMBER, NOT MEETING A SIZE CALIBRATION.



W4 (BLACK SPOTTED WHOLE)

DELICIOUS WHOLE CASHEW NUT KERNEL, OF 4th QUALITY WITH DIFFERENT COLORS AND BLACK SPOTS (BITS), NOT MEETING A SIZE CALIBRATION.



W5 (DESSERT WHOLE)

DELICIOUS WHOLE CASHEW NUT KERNEL, OF 5th QUALITY WITH A COLOR THAT COULD BE DARK YELLOW, BROWN OR AMBER AND WITH BLACK SPOTS (BITS), NOT MEETING A SIZE CALIBRATION.

AVAILABLE TYPES :

- NATURAL
- ROASTED
- ROASTED AND SALTED



S1 (SPLITS)

1st QUALITY, PALE-COLORED, PARALLEL-SPLIT IN HALF SIZE, COMPRISED OF WHOLE KERNEL COTYLEDONS, INCLUDING THOSE WITH SMALL SPLITS OF UP TO 1/8 OF THEIR ORIGINAL SIZE.



B1 (BUTTS)

1ST QUALITY, PALE-COLORED, WITH A TRANSVERSAL FRACTURE IN ONE OR BOTH COTYLEDONS, WITH A DIMENSION FROM 3/8 UP TO 7/8 OF THE KERNEL ORIGINAL SIZE.



P1 (PIECES)

DELICIOUS CASHEW NUT KERNEL PIECES, OF 1st QUALITY, PALE-COLORED, WITH UP TO 1/4 THE ORIGINAL SIZE OF A SPLIT.



P2 (PIECES)

DELICIOUS CASHEW NUT KERNEL PIECES, OF 2nd QUALITY, YELLOW-COLORED, WITH UP TO 1/4 THE ORIGINAL SIZE OF A SPLIT.

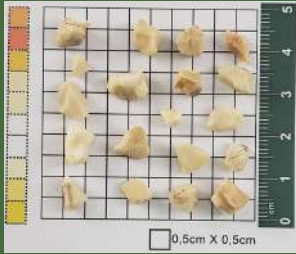
AVAILABLE TYPES:

- NATURAL - ROASTED - ROASTED AND SALTED



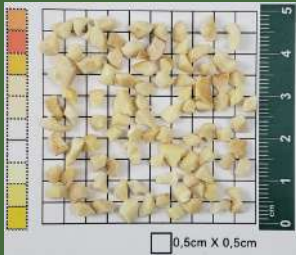
SP1 (SMALL PIECES)

SMALL PIECES, OF 1st QUALITY, PALE-COLORED AND SMALLER THAN THE PIECES (P) SIZE, COMPRISING HIGHLY THICK GRANULATE.



SP2 (SMALL PIECES)

SMALL PIECES, OF 2nd QUALITY, YELLOW-COLORED AND SMALLER THAN THE PIECES (P) SIZE, COMPRISING HIGHLY THICK GRANULATE.



SSP1 (SPECIAL SMALL PIECES)

1st QUALITY, PALE-COLORED AND SMALLER THAN THE SMALL PIECES (SP) SIZE, COMPRISING A THICK GRANULATE.

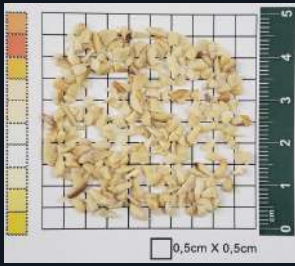


SSP2 (SPECIAL SMALL PIECES)

2nd QUALITY, YELLOW-COLORED AND SMALLER THAN THE SMALL PIECES (SP) SIZE, COMPRISING A THICK GRANULATE.

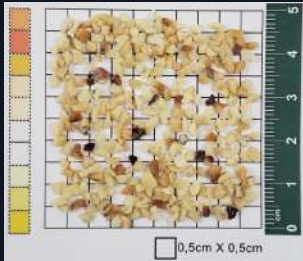
AVAILABLE TYPES:

- NATURAL
- ROASTED



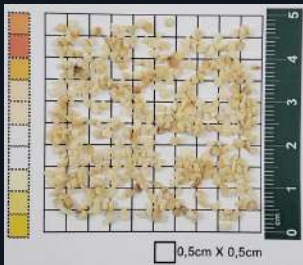
G1 (GRANULATE)

1st QUALITY, PALE-COLORED AND SMALLER THAN THE SPECIAL SMALL PIECES (SSP) SIZE, COMPRISING A MEDIUM GRANULATE.



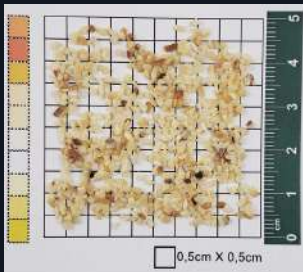
G2 (GRANULATE)

2nd QUALITY, YELLOW-COLORED AND SMALLER THAN THE SPECIAL SMALL PIECES (SSP) SIZE, COMPRISING A MEDIUM GRANULATE.



X1 - XEREM (THINNER GRANULATE)

1st QUALITY, PALE-COLORED AND SMALLER THAN THE GRANULATE (G) SIZE, COMPRISING A THIN GRANULATE.

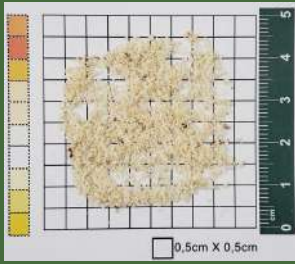


X2 - XEREM (THINNER GRANULATE)

2nd QUALITY, YELLOW-COLORED AND SMALLER THAN THE GRANULATE (G) SIZE, COMPRISING A THIN GRANULATE.

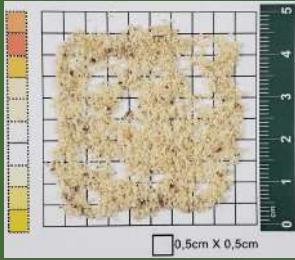
AVAILABLE TYPES :

- NATURAL - ROASTED



F1 (FLOUR)

1st QUALITY, PALE-COLORED AND SMALLER THAN THE XEREM (X) SIZE, COMPRISING A WONDERFUL FLOUR.



F2 (FLOUR)

2nd QUALITY, YELLOW-COLORED AND SMALLER THAN THE XEREM (X) SIZE, COMPRISING A WONDERFUL FLOUR.

AVAILABLE TYPES :

- NATURAL - ROASTED

CASHEW NUT BUTTER

OUR WHOLE CASHEW NUT BUTTER IS 100% MADE OF OUR KERNELS, WITHOUT ANY OTHER ADDITIVE OR MIXTURE. THIS PRODUCT WAS DEVELOPED ON OUR FACILITY AND IT'S BEING OFFERED IN FIVE DIFFERENT FORMS, FROM NATURAL AND SLIGHTLY ROASTED UP TO HEAVILY ROASTED, THUS BEING CONDITIONED AND SHIPPED ON OUR PLASTIC BUCKET.

MAIN PACKAGING



Carton Box 22,68kg (50Lb) :

100% kraft paper, providing further protection and resistance against breaks. Primary packaging in a foil bag under vacuum and Modified atmosphere packaging (MAP). Shelf-life of 24 months.

OTHER PACKAGINGS



Plastic Bucket 11,34kg (25 Lb) :

Providing further protection and resistance against breaks. Primary packaging in a foil bag under vacuum and Modified atmosphere packaging (MAP). Shelf-life of 24 months.



Carton Box 11,34kg (25Lb) :

100% kraft paper, providing further protection and resistance against breaks. Primary packaging in a foil bag under vacuum and Modified atmosphere packaging (MAP). Shelf-life of 24 months.



CONTACT US

COMMERCIAL

BRAZILIAN MARKET:

comercial@onvit.com.br

 +55 85 99108-2981

INTERNATIONAL MARKET:

comex@onvit.com.br

 +55 85 99203-9672

ADMINISTRATIVE

adm@onvit.com.br

 +55 85 99193-4106

+55 85 3260-1429

COSTUMER SERVICE

sac@onvit.com.br

+55 85 3260-1429

AV. SETE DE SETEMBRO, N° 758 - MACHUCA

61.700-000, AQUIRAZ/CE, BRAZIL

WEBSITE: <https://en.onvit.com.br/>